



CAIN CENTER FOR THE ARTS TECHNICAL SPECIFICATIONS

SPRING 2026

Adam Campbell, Technical Director
acampbell@cainarts.org | 704.997.8105

CAIN
CENTER
FOR THE ARTS 

Physical Address

**21348 Catawba Avenue
Cornelius, NC 28031**

Loading Dock

35°28'53.7"N 80°51'36.1"W

Directions:

From our location at 21348 Catawba Avenue, turn onto Milling Way, then turn right onto access road to loading dock in rear of facility. Shore Power and Tour Bus Parking available (See below for shore power connection type and the designated tour bus parking area)



 No Public Parking

 Free Public Parking



Stage Dimensions

- Stage Floor: 38' wide x 30' deep
 - Semi-sprung floor painted flat black with Rosco Tough Prime
- Dimensions of "proscenium opening": 38'w x 19' 10"h
- Proscenium Curtain to Cyc: 30'
- Width: 36'-45' (adjustable leg track)
- Height: 19' 10" Stage to Teaser
- Wall Depth: 36', downstage lip to upstage wall
- Wall Width: 72', SL to SR Wall
- Wing space
 - SL 32'd x 12'w
 - SR 32'd x 15'w
- Height to tension wire grid: 25'

House/Audience

- Chairs: 401 (32 are loose parterre chairs)
- Orchestra 1st floor approximately 55'x 50'
 - 271 seats total
 - 176 seats in orchestra
 - 79 seats in rear orchestra
 - 16 parterre loose seats
- Balcony 2nd floor approximately 20' x 50'
 - 129 seats total
 - 113 seats in balcony
 - 16 parterre loose seats

Soft Goods: Downstage to Upstage

- Teaser w/ Decorative Valence and Tassels
- Decorative Legs with Tassels
 - Adjustable opening between 38'-44' wide
- Main Curtain (Traveler Style): Full Stage Draw Curtain
- 2 sets of Permanent Legs: Midstage @ 10' , Upstage @ 20'
 - Adjustable opening between 38'-44' wide.
 - Side Tabs for masking backstage, dead hung between legs 45' opening

-
- Black scrim
 - Upstage Blackout (Traveler style): Draw Curtain
 - Cyclorama

Electrics

Note: Cain Center for the Arts has a Tension Wire Grid in the space for lighting instruments, not a Line Set System. The only traveling battens in the space are motorized, and live upstage (see section entitled “Upstage Motorized Battens”)

- Light Console:
 - ETC IONxe20
 - 2 x 24” touchscreen monitors
- House Lights:
 - All houselights can be controlled via 1 of 2 Paradigm Touchpanels in the theatre, or IONxe20 Console
 - ETC Paradigm Architectural Lighting
 - 22 RGBW LED Bars
 - 6 ETC Colorspot JR Balcony Rail Rigged Fixtures
 - 6 Channels of RGBW Color Dots Recessed into Wenger Diva Shell Ceiling Panels
- Circuits: **ZERO traditional dimmers or dimmable circuits.**
- Lighting Instrument/Fixture Connectivity
 - 4 x ETC Response Mk2 DMX Gateways
 - Integrated lighting is all network driven.
 - Fixtures are connected via Pathport Octo 8 Port Gateways with Patch Panel locations onstage & throughout theatre for DMX connectivity with assignable universes
- Over-stage
 - Wash: 40 x ETC Desire D40 Vivid instruments
 - High Sides: 8 x Source Four LED Series Two instruments
 - Grid of Nine: 9 x 8 Source Four LED Series Two instruments
 - Cyc Elec: 9 x ETC Colorsourc Cyc instruments
- FOH Wash
 - 15 x 8 Source Four LED Series Two instruments
- Balcony Rail
 - 12 x ETC Desire D40 Vivid instruments
 - 2 x ETC Source Four LED Series Two Instruments
- Ground Package

- 8 x ETC Colorsound Cyc Instruments (used for ground row)
- 2 x High End System Studio Spot Theatrical Fixtures
- 8 x Chauvet DJ Intimidator Spot 360x Moving Head Fixtures
- 4 x Chauvet DJ Colorband Q3BT ILS Linear Wash Lights
- 1 x Chauvet Pro Amhaze Eco Haze Machine
- 6 x Lighting Booms w. Schedule 10ft tall 40 Pipe

Audio

- FOH Mixing Console: Yamaha DM7
 - Side Stage Connectivity:
 - 1 x Yamaha Rio 3224-D3 32-input/24-output
 - 1 x Yamaha Rio 1608-D3 16-input/8-output
 - 1 x 32 Channel Seismic Audio Splitter
- Monitor Mixing Console: Midas M32
- Main Loudspeakers:
 - Martin WPM flown Line Array @ Left, Center, Right
 - Comprised of 5 boxes per array stack.
 - Martin 2x18" Subwoofers
 - one 2x18" flown stage Left, one 2x18" flown Stage Right
 - 2 18" floor subs, one on House Left, and one on House Right
 - 5 Martin CDD6B 6.5" Front Fill Speakers
 - Mounted Theatre Supplementary/Surrounding Martin CDD6B 6.5" speakers
 - Martin IK81 Amplifiers (For LCR, LFE & Passive Wedges)
 - QSC CX-Q 4K8 (For all supplementary speakers)
- 2 Midas DL16s with Seismic Audio XLR Split located Stage Left
- Wireless Microphones
 - 8 Shure ULXD Wireless Handheld w/ SM58 capsules connected via Dante
 - 6 Shure ULXD Belt Packs connected via Dante
 - 4 Countrymen Lapel Microphones
 - 6 "Over-the-ear" Countrymen Microphones
- Dynamic Microphones
 - 1 Shure Beta 52A
 - 6 Shure Beta 57s
 - 5 Shure Beta 58s
 - 4 Shure SM57s
 - 7 Shure SM58s
 - 5 Sennheiser e604s
- Condenser Microphones

-
- 3 Shure SM81s
 - 3 Shure Beta 91A PZM
 - 4 Shure MX202 Overhead Hanging Mics
 - 2 AKG C414s
 - 3 DPA 4099s
 - Direct Boxes
 - 4 Radial J48 Active DIs
 - 4 Radial Engineering JDI Passive Mono DIs
 - 2 Telefunken TDA-2 Dual Active Stereo DIs
 - 2 Radial Engineering JDI Passive Stereo DI
 - Monitors/Speakers
 - 4 Martin LE100 Passive Speakers
 - 4 RCF 12" Active Speakers
 - Microphone/Instrument Stands
 - 12 x K&M Booms Stands
 - 4 x Triad Orbit Boom Stands
 - 4 x Tabletop stands
 - 4 x round base stands
 - 3 x short boom stands
 - 4 Hercules Guitar Stands (2 Single Stands, and 2 Double Stands)

Communication

- Clear Comm Wired Comm System
 - 1 MS-702
 - 8 x RS-701 Wired Beltpacks
 - 2 U-BOX Speaker Stations
 - 8 x Headsets
 - 2 Channel Capability

Video/Projection

- DWU23-HS Christie Projector (18,500 Lumens)
- Motorized Screen 32'x18' located mid-stage
- Distance: 60'
- Resolution: 1920 x 1080 or 1080p 60hz

-
- HDMI connection at Stage Right, Lighting booth or FOH mix position (HDMI Connection locations are adjustable)
 - 2 Denon DN-500BD MKII DVD/Bluray Players w. XLR Outputs
 - M1 Studio Computer at Stage Manager's Desk SR with QLab for easy connectivity and display
 - DSAN Perfect Cue Micro Presentation Clicker

Upstage Motorized Battens

- 2 x ETC Motorized Battens
- Batten # 1 – Empty
- Batten #2 – Cyclorama
- 1000lb weight limit on each Batten

Assistive Listening

- Listen ALS system fed from Stereo Bus
- 20 x Listen receiver belt-pack
- 20 x Headphones
- 6 x Intelligent Earphone/Neck Loop Lanyard
- 24 x Charging trays

Misc. Tech

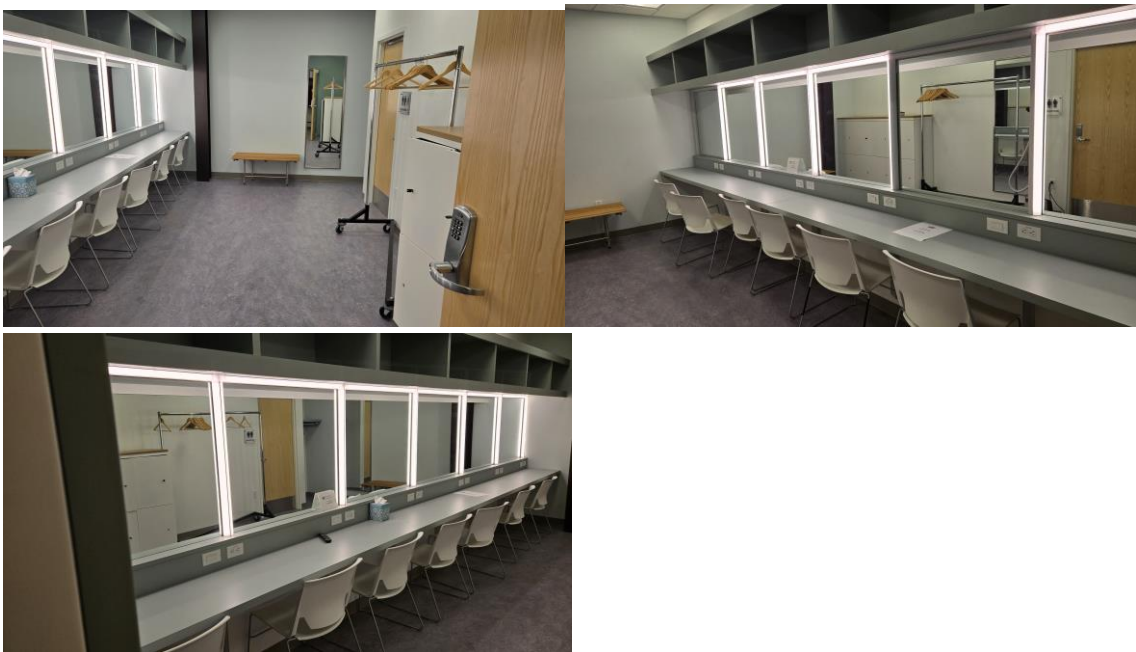
- 2 60" Samsung TVs on AV Carts
- Midas MR18 Tablet Controlled Digital Mixer
- Fender Passport PA System
- 2 iPads
- Speaker Stands
- 1 Podium with Removable Cain Center Placard
- 5 Black Bar Stools
- 2 Leather Padded Executive Chairs
- 5 Stage Rugs
- 1 Short Coffee Table/End Table

Wardrobe

- 2 x Coat Racks w/ Hangers
- 2 x Irons
- 2 x Ironing boards
- 1 x Steamer
- Full Body White Towels
- Black Hand Towels
- Washer and Dryer

Dressing Rooms

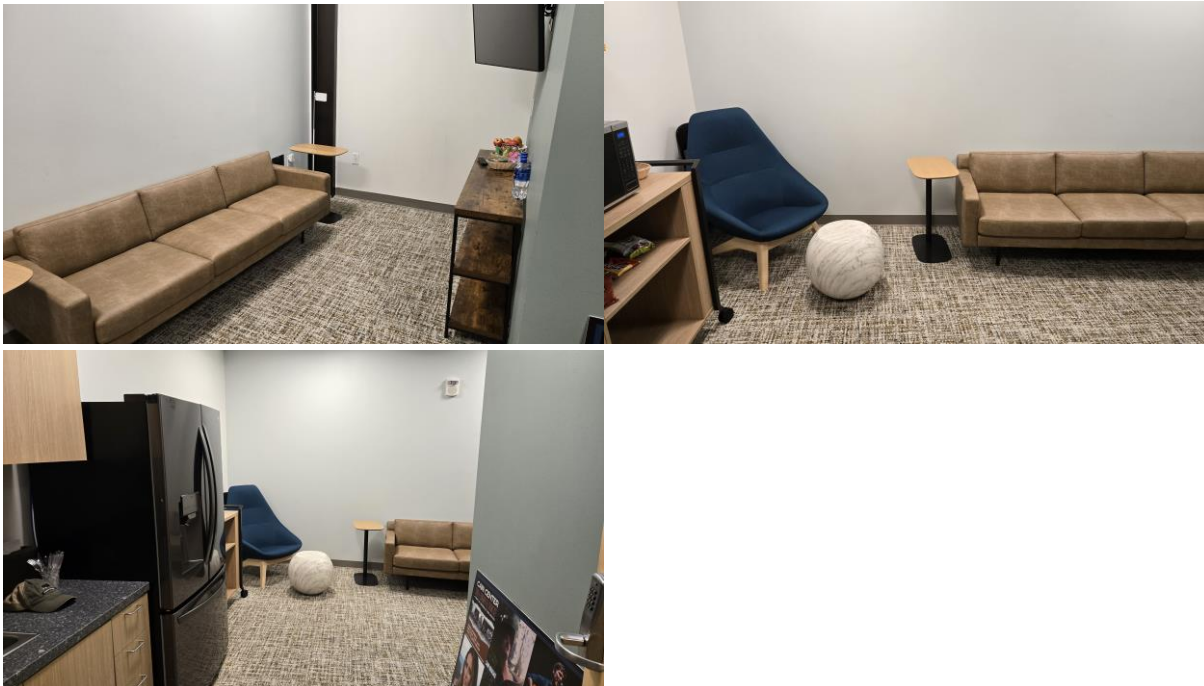
- Two six-person dressing rooms
- Full-length Mirrors
- 6 x Chairs each room
- 2 Lockable Storage cabinets (1 in each Dressing Room)
- 2 x Bathrooms with Showers (1 in each Dressing Room)
- (See Below for Dressing Room Reference Photos)



Green Room

- Space for 5 people
- One Chair
- One Couch

- Full size refrigerator
- Microwave
- K-cup Coffee Maker
- Electric Tea Kettle
- Plates and Silverware
- Sink
- (See Below for Green Room Reference Photos)



Loading Dock

Note: Dock does NOT have a lift gate, only a dock leveler (see below for more info)

- Standard 48" Loading Dock elevation
- Dock Leveler adjusts for 42" to 54" truck heights
- Dock Door is 8' wide by 10' tall

***Questions? Contact Technical Director
Adam Campbell at acampbell@cainarts.org or 704.997.8105.***